

**OUTLINE SPECIFICATIONS**

Perform Stakeout by registered surveyor or engineer to satisfaction of Township and Landscape Architect, indicating location of all facilities.

**5 FT PATH:** Remove topsoil to its full depth. Provide competent, compacted material for subgrade to allow for a 6" total depth of aggregate, consisting of a free-draining 3" base (AASHO #57), topped w/ 3" TSA (Trail Surface Aggregate), per Penn State Center for Dirt and Gravel Roads, Technical Bulletin, smoothed and rolled and sloping in the direction of the grade.

**CRUSHED AGGREGATE PARKING AREAS:** # 2A crushed aggregate, or DSA Driving Surface Aggregate Per Center per Dirt and Gravel Roads. 8" depth, smoothed and compacted, sloping in direction of grade.

**TREES and PLANTINGS:** All Plant Material shall conform to American Standard for Nursery Stock (ANSI Z60.1). Shade Trees to be 2-2-1/2" caliper planted size, Flowering Trees & Evergreen Trees 6-8 ft height, well branched. Shrubs shall also conform to ANSI Z60.1.

**SEEDING:** PennDot formula "B" per form 408 Specifications

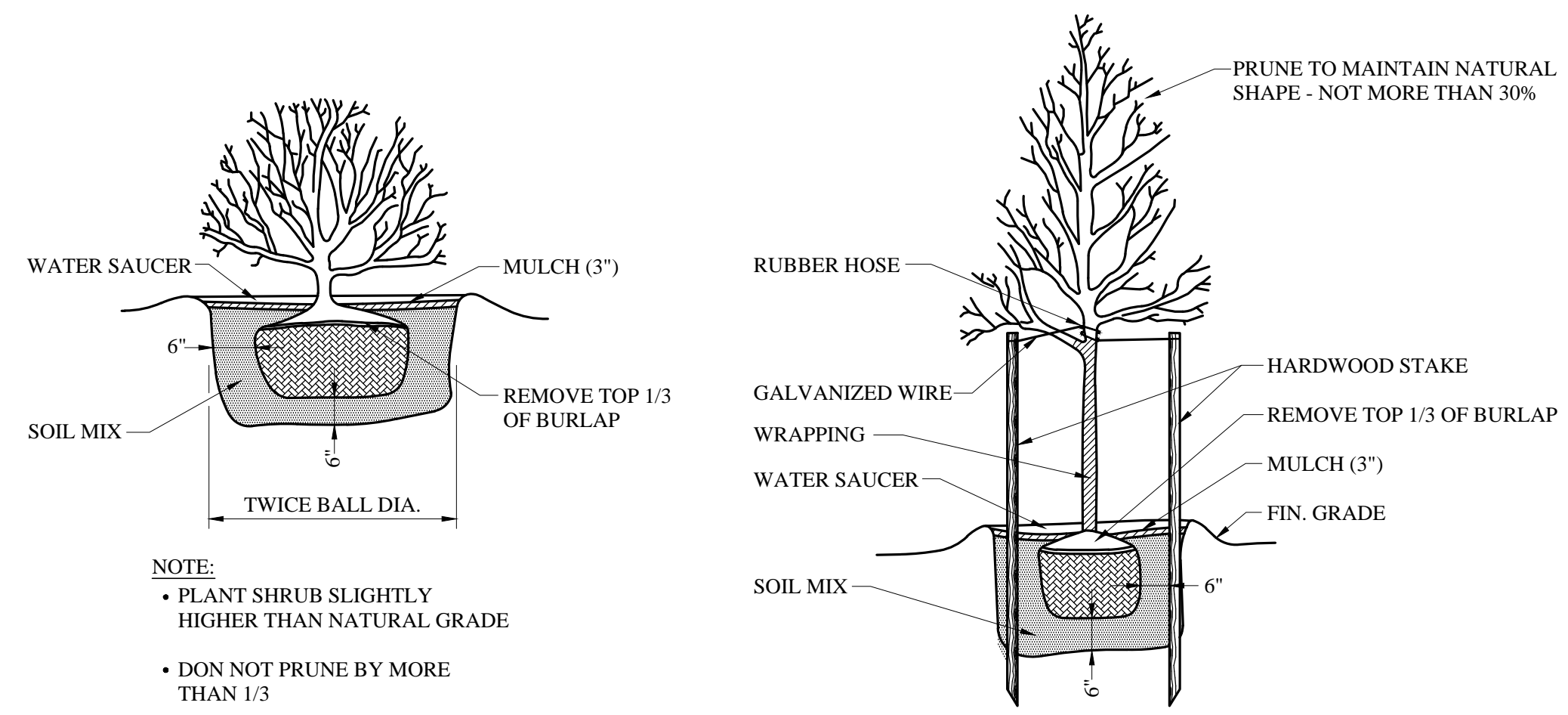
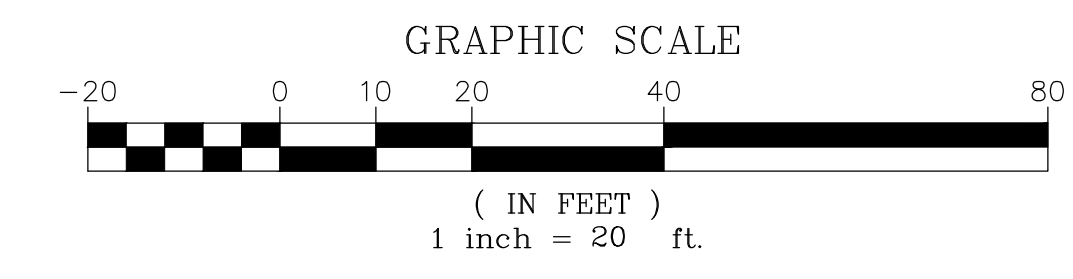
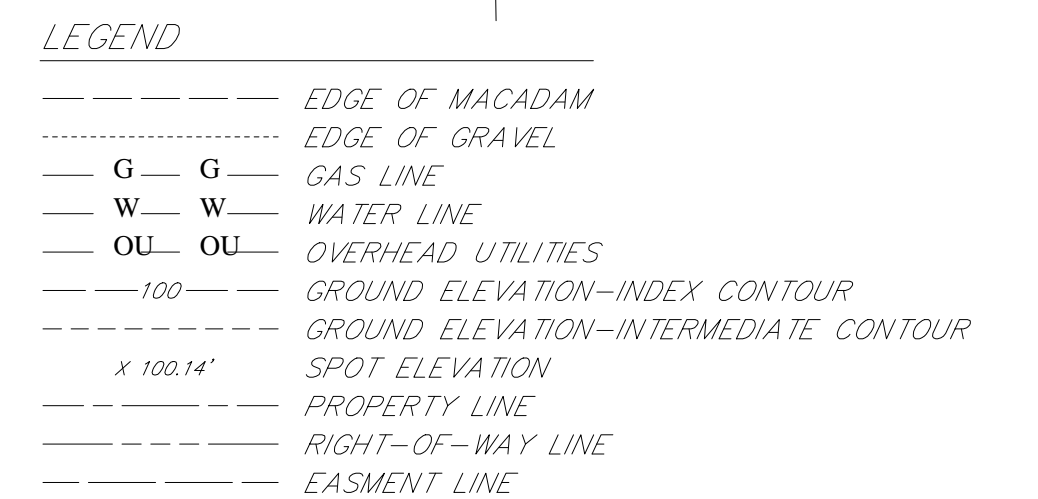
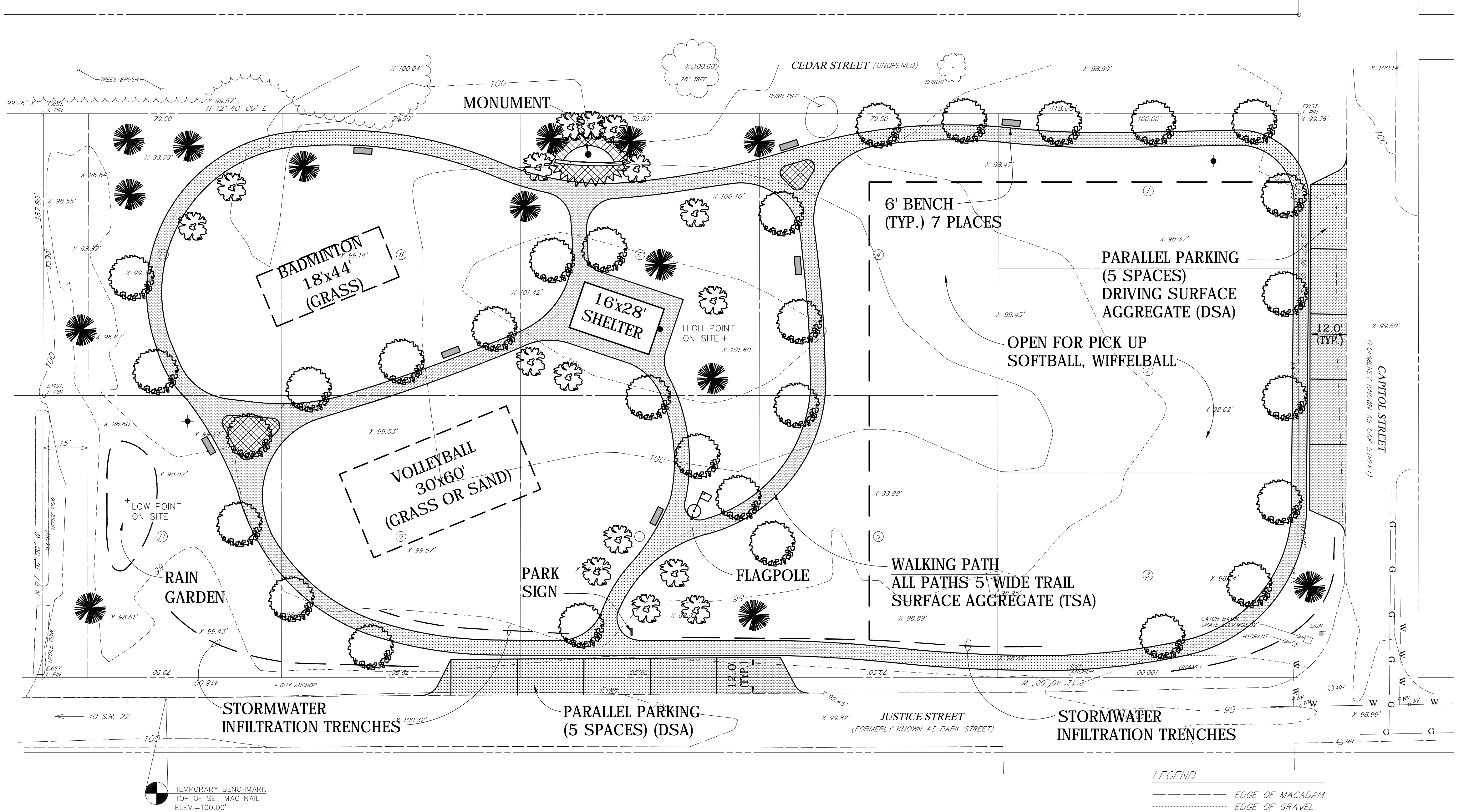
**SHELTER:** 16 x 28 Ft Laminated Arch Beam Shelter Kit w/ 4" Concrete Floor slab, extending 1 ft beyond drip edge-all sides - 3500 PSI; as CEDAR FOREST PRODUCTS # LB1638 or equal; cedarforestproducts.com

**SITE FURNISHINGS:** All imbedded mounting except rectangular tables

- 6' PICNIC TABLE- RECTANGULAR: Table #75-60D
- PICNIC TABLE- RECTANGULAR ADA ACCESSIBLE: Table #75-681D
- PICNIC TABLE- SQUARE: Table #76-34D
- 6 FT BENCH: #Bench 88-60D
- TRASH RECEPTACLE: 22 Gallon #41-22D

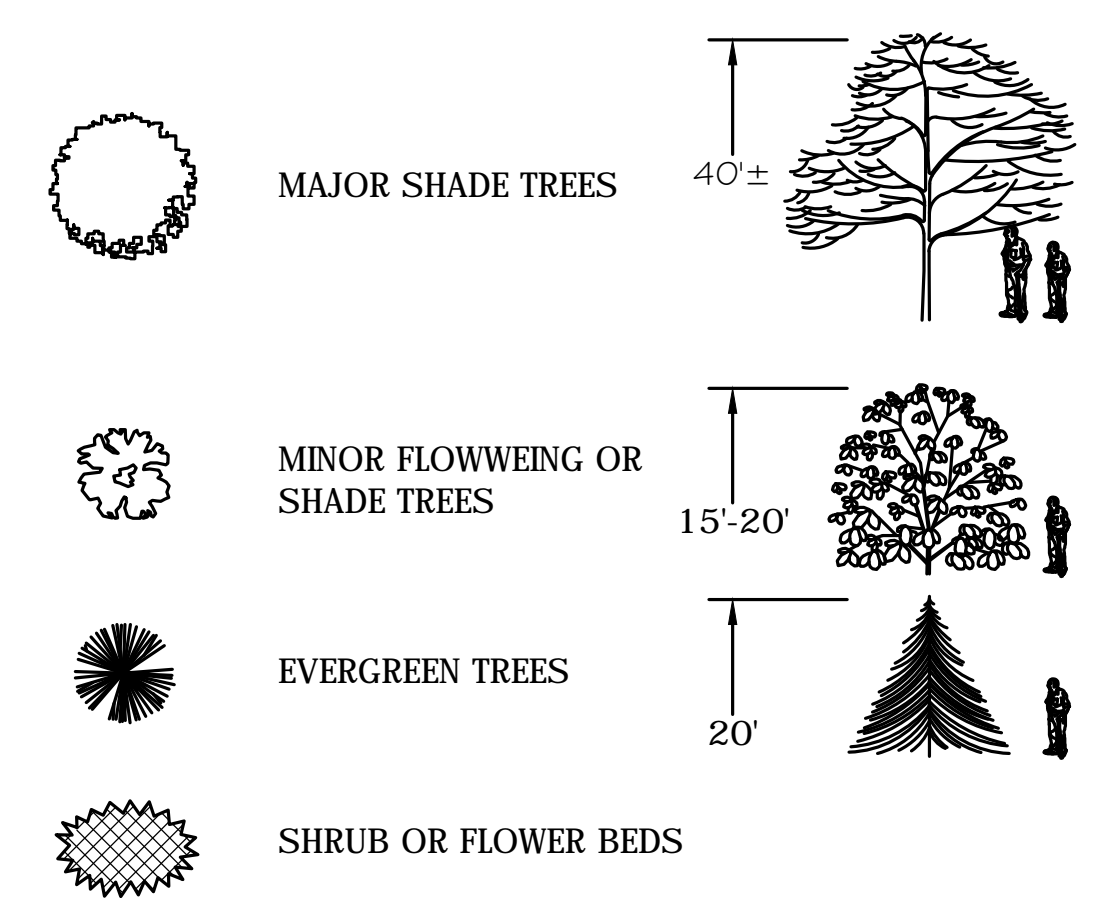
- Furnishings by DuMor, Inc. Mifflintown, PA sales@dumor.com
- DOG WASTE STATION: Sign, post, dispenser # H2898,2987,1662 By Uline (800) 295-5510
- FLAGPOLE - 30' ALUMINUM
- + DAWN - DUSK LIGHTING (3 PLACES)

**STORM WATER DESIGN, E&S MEASURES, PERMITTING, APPROVALS:** By Township and Township Engineer prior to commencing construction activities.



**PLANTING DETAILS**

**KEY TO PLANTING**



Funding for this project, the "Blair Township-Fort Fetter Park Master Plan", was provided in part through a grant from the Pennsylvania Department of Natural Resources, Bureau of Recreation and Conservation's Environmental Stewardship Fund and administered by the Southern Alleghenies Planning and Development Commission.

**Stephen Parks & Associates**  
Athletic Facilities Consultants  
412 Allegheny Street, Hollidaysburg, Pennsylvania 16648  
Telephone (814) 932-2198  
Fax (814) 696-0105

**MASTER SITE DEVELOPMENT PLAN**  
FOR  
**THE BLAIR TOWNSHIP SUPERVISORS**  
BLAIR TOWNSHIP, BLAIR COUNTY, PENNSYLVANIA

DATE: 03/07/21  
SCALE: 1"=20.0'  
DRAWN BY: JJT  
CHECKED BY: STP  
PROJECT No.003139A